



EMERGENCY NUMBER: 800-203-0285

About Aspire Energy of Ohio

Aspire Energy of Ohio operates approximately 2,500 miles of gathering and distribution line within Ohio.

What does Aspire Energy of Ohio do if a leak occurs?

To prepare for the event of a leak, pipeline companies regularly communicate, plan and train with local emergency responders. Upon the notification of an incident or leak the pipeline company will immediately dispatch trained personnel to assist emergency responders.

Pipeline operators and emergency responders are trained to protect life, property and facilities in the case of an emergency.

Pipeline operators will also take steps to minimize the amount of product that leaks out and to isolate the pipeline emergency.

Maintaining safety and integrity of pipelines

Aspire Energy of Ohio invests significant time and capital maintaining the quality and integrity of their pipeline systems. Most active pipelines are monitored 24 hours a day via computerized remote monitoring and control systems. These systems continually monitor the pipeline and assess changes in pressure and flow. If the system indicates abnormalities within the pipeline, trained technicians are immediately notified. Automatic shut-off valves are sometimes utilized to isolate a leak. In the unlikely event of a pipeline emergency, Aspire Energy of Ohio personnel will assist emergency responders to help prevent loss of life, property, and damage to the environment.

How to get additional information

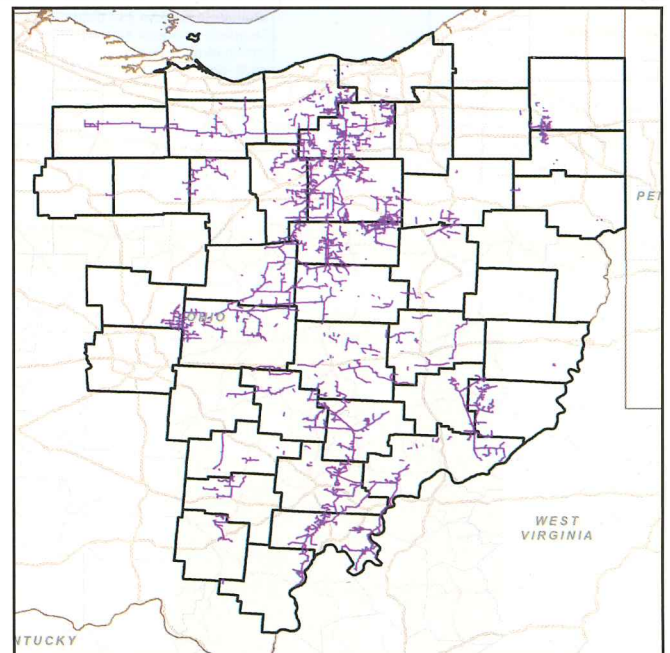
For an overview of Aspire Energy of Ohio's IMP or additional information, go to www.chpk.com/companies/aspire-energy or contact us at 330-682-7726.

PRODUCTS TRANSPORTED

SYSTEM MAP

PRODUCTS TRANSPORTED IN YOUR AREA

PRODUCT	LEAK TYPE	VAPORS
NATURAL GAS	Gas	Lighter than air and will generally rise and dissipate. May gather in a confined space and travel to a source of ignition.
HEALTH HAZARDS	Will be easily ignited by heat, sparks or flames and will form explosive mixtures with air. Vapors may cause dizziness or asphyxiation without warning and may be toxic if inhaled at high concentrations. Contact with gas or liquefied gas may cause burns, severe injury and/or frostbite.	



PIPELINE MARKER

